

Step-by-step technique

1. Clean the prepared teeth with pumice and water. As an option for increased retention - apply Fuji PLUS conditioner for 20 seconds. Rinse and gently dry.



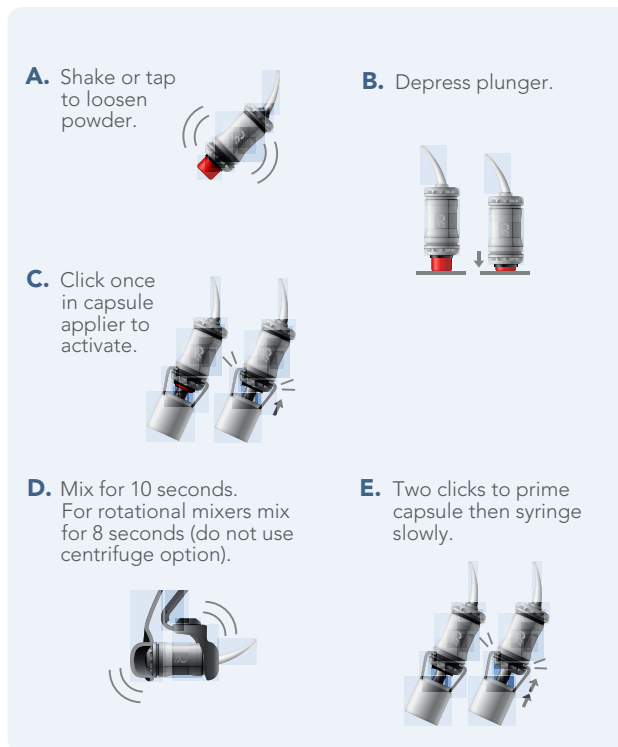
2. Mix GC Fuji PLUS. Coat the internal surface of the restoration with 1mm of cement and seat within 30 seconds.



3. Remove excess cement at the first formation of gel stage (approx. 1 minute after seating).



4. Maintain isolation until the final set is verified (approx. 4 minutes).



GC Fuji PLUS remains the benchmark formulation of resin reinforced glass ionomer cement, with superior adhesive and sealing characteristics that ensure consistent long term retention and ongoing protection for the tooth.

GC Glass Ionomer Luting Cement Family

GC Fuji PLUS

Resin reinforced glass ionomer luting cement

GC Fuji PLUS Capsules

Box 50 capsules (0.19ml per capsule)

GC Fuji PLUS 1-1PKG

Powder, 15gm
Liquid, 8gm
Conditioner, 6.5ml
mixing pad



GC FujiCEM

Resin modified glass ionomer luting cement

Paste Pak cartridge

13.3gm/7.2ml, with mixing pad

Paste Pak dispenser



GC Fuji I

Glass ionomer luting cement

GC Fuji I Capsules

Box 50 capsules (0.19ml per capsule)

GC Fuji I 1-1PKG

Powder, 35gm
Liquid, 20ml
Mixing pad



'GC'

GC Asia Dental Pte Ltd
Changi Logistics Centre
19 Loyang Way #06-27 Singapore 508724
Tel +65 6546 7588 Fax +65 6546 7577
www.gcasia.info

Copyright © 2009

oa FPLUS SSS 12/09



GC Fuji PLUS
Smooth, Strong, Secure

'GC'

GC Fuji PLUS, your first choice of luting cement – from the world's leading glass ionomer cement company.

THE DENTAL ADVISOR
"Improved Patient Care through Research"



REALITY
THE INFORMATION SOURCE FOR ESTHETIC DENTISTRY



15 PLUS years of confidence and reliability

GC Fuji PLUS is a resin reinforced glass ionomer luting cement that has consistently delivered stress-free cementation of routine crown and bridge restorations; and provided the highest level of confidence through exceptional long term clinical results.

A perfect consistency

If you have used it, you will know just what we mean. GC Fuji PLUS features finely ground glass fillers which help create an exceptionally smooth and creamy mix of cement. The resulting flow characteristics and a low 10 micron film thickness mean GC Fuji PLUS offers smooth seating for all your crown, bridge and post/core restorations.

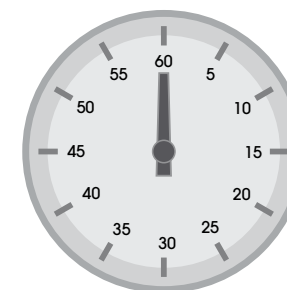


Snap set

GC Fuji PLUS features snap set characteristics that allow excess cement to be very simply removed, just 60 seconds after seating. The fast setting speed signals a rapid development of physical properties giving a robust structure better able to protect the tooth from post-seating stresses placed on the restoration. Should a slower set be required, GC Fuji PLUS capsules can be refrigerated to extend the working and setting times.

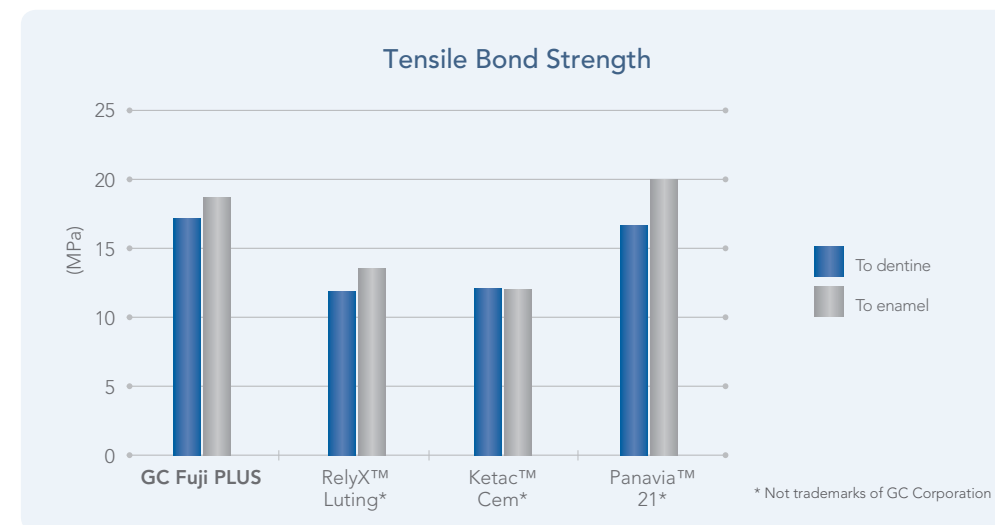


60 seconds



Strength

The use of resin reinforcement technology in GC Fuji PLUS results in a significant increase in the cohesive strength of the cement structure. This accentuates the adhesive benefits of the glass ionomer chemistry, increasing the retentive strengths of the cement.



Security

GC Fuji PLUS is moisture tolerant during placement and will chemically bond to dentine, enamel and cementum providing a predictable seal that ensures the incidence of post insertion sensitivity is extremely low.

Ongoing fluoride release provides continuous protection to adjacent surfaces and the acid resistance of GC Fuji PLUS means excellent long term marginal integrity and seal is maintained.

A wide range of indications

- Cementation of all types of metal, porcelain fused to metal and resin crowns, inlays, onlays and bridges.
- Cementation of porcelain inlays.
- Cementation of all types of core material including prefabricated pins, posts and cast posts.
- Cementable reinforced all ceramic crowns (eg. Procera).

GC Fuji PLUS - Fluoride release

