

# everStick®C&B

## Fibre reinforcement for composite bridges

DISTRIBUTED BY

GC CORPORATION  
76-1 Hasunuma-cho, Itabashi-ku,  
Tokyo 174-8585, Japan

GC EUROPE N.V.  
Researchpark Haasrode-Leuven 1240,  
Interleuvenlaan 33,  
B-3001 Leuven, Belgium  
TEL: +32 16 74 10 00

GC AMERICA INC.  
3737 West 127th Street, Alsip, IL 60803 U.S.A.  
TEL: +1-708-597-0900  
www.gcamerica.com

RESPONSIBLE MANUFACTURER IN CANADA

GC AMERICA INC.  
3737 W. 127th Street, Alsip, IL 60803 U.S.A.

GC ASIA DENTAL PTE. LTD.  
5 Tampines Central 1  
#06-01 Tampines Plaza  
Singapore 529541 TEL: +65 6546 7588

GC AUSTRALASIA DENTAL PTY. LTD.  
1753 Botany Rd, Banksmeadow,  
NSW 2019, Australia  
TEL: +61 2 9301 8200

GC SOUTH AMERICA  
Rua Heliadora, 399,  
Santana - São Paulo, SP, Brasil  
CEP: 02022-051  
TEL: +55-11-2925-0965  
CNPJ: 08.279.999/0001-61  
RESP. TÉC: MAYARA DE SANTIS RIBEIRO -  
CRO/SP 105.982



**Fibre type:** Silanated E-Glass fibre impregnated with Bis-GMA and PMMA

**Form:** Unidirectional fibre bundle  
**Diameter:** ~1.5-1.7 mm



Keep away from sunlight



Temperature limit

Caution: US Federal law restricts this device to sale by or on the order of a dentist.  
NU7610 - 30000524

951328 – NU7610  
30000524

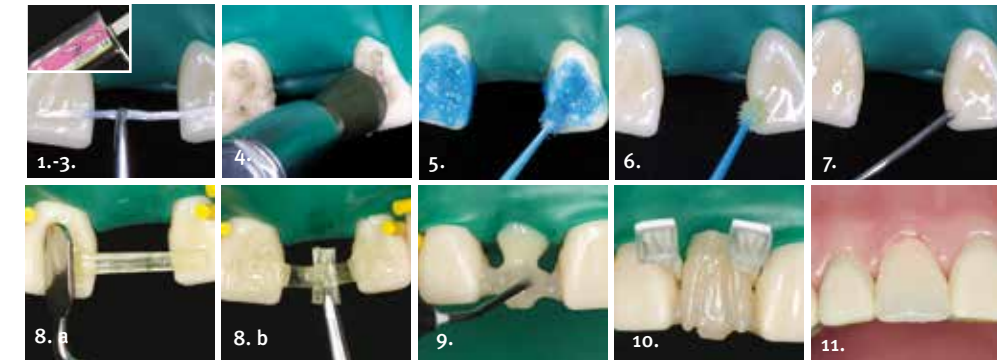
# everStick®C&B

EN  
DE  
FR  
IT  
ES  
NL  
DA  
SV  
PT  
EL  
FI  
ZH  
ID

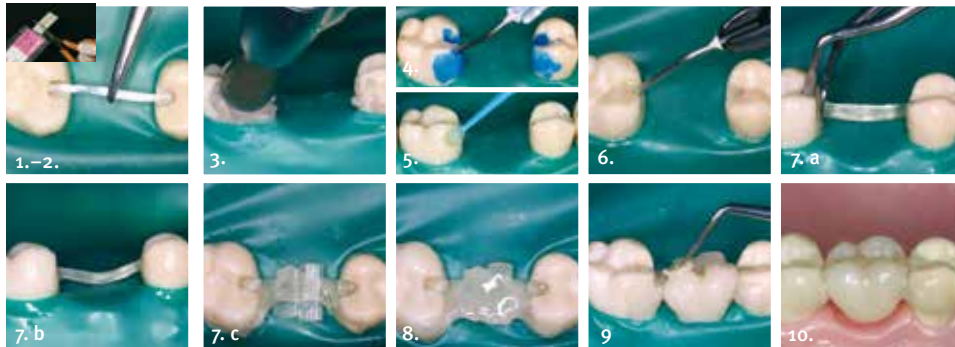
FIBRE REINFORCEMENT FOR COMPOSITE BRIDGES  
GLASFASERVERSTÄRKUNG FÜR COMPOSITEBRÜCKEN  
FIBRE DE RENFORT POUR BRIDGES COMPOSITE  
RINFORZO IN FIBRA PER PONTI IN COMPOSITO  
FIBRA DE REFUERZO PARA PUENTES DE COMPOSITE  
VEZELVERSTERKING VOOR COMPOSITBRUGGEN  
FIBERFORSTÆRKNING TIL KOMPOSITBROER  
FIBERFÖRSTÄKNING TILL KOMPOSITBROAR  
FIBRA PARA REFORÇO DE PONTES DE RESINA COMPOSTA  
ΙΝΕΣ ΥΑΛΟΝΗΜΑΤΩΝ ΓΙΑ ΕΝΙΣΧΥΣΗ ΓΕΦΥΡΩΝ ΑΠΟ ΠΟΛΥΜΕΡΗ ΥΛΙΚΑ  
LASIKUITULUJITE KUITULUJITTEISIIN YHDISTELMAMUOVISILTOIHIN  
用于各种合成牙桥制作的复合树脂纤维  
SERAT YANG DIPERKUAT UNTUK JEMBATAN KOMPOSIT



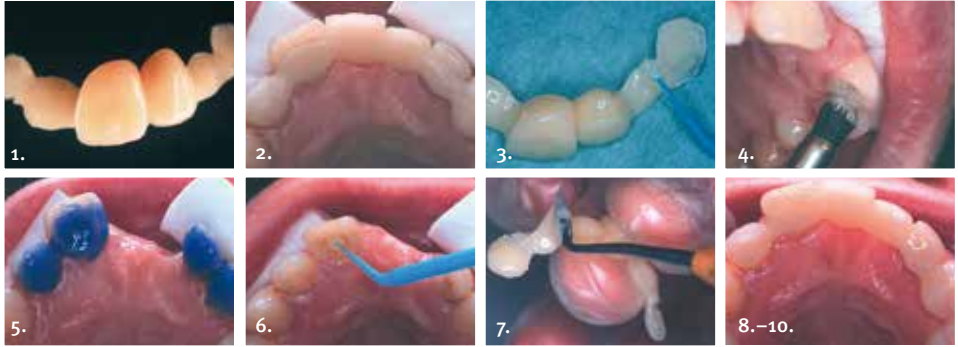
everStick®  
C&B 1. A surface retained bridge in the anterior region



**everStick®**  
**C&B** 2. A surface retained bridge in the posterior region



**everStick®**  
**C&B** 3. Cementation instructions



.....  
.....  
.....  
.....  
.....  
.....  
.....  
.....